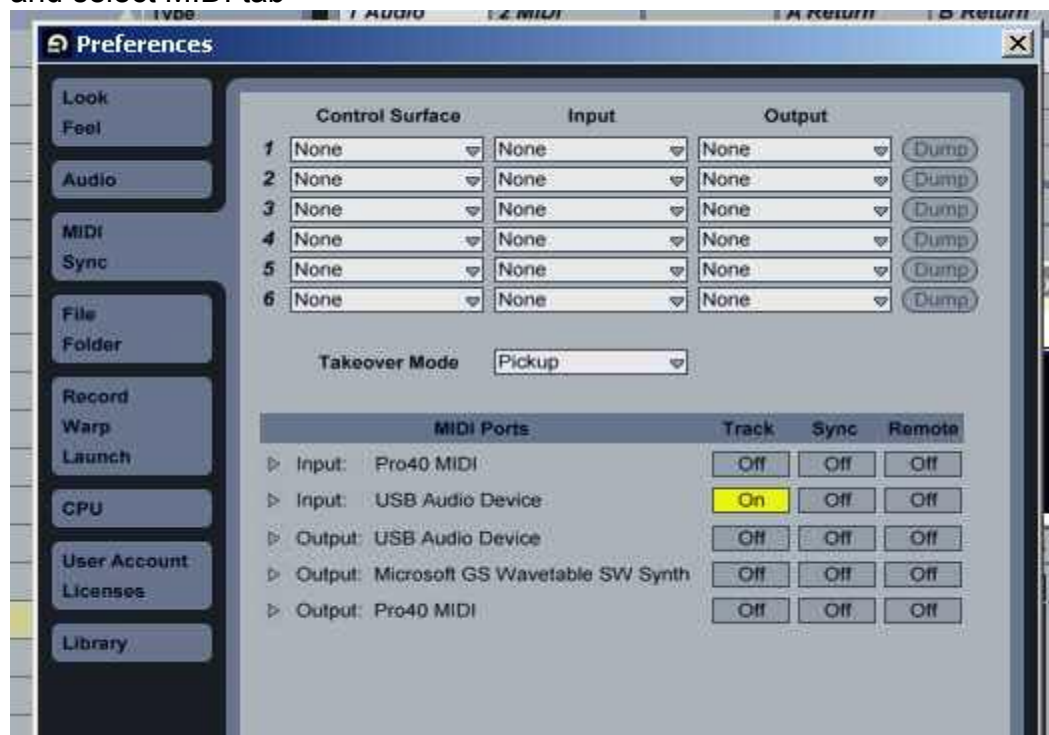


HowTo get looping with Echoloop in Ableton Live.

(this demo made in Live v8.1)

Assuming you have your Midi controller set up correctly,
as it would be for hardware EDP.

1) From main menu, Options>Preferences
and select MIDI tab



for your chosen midi input device, turn 'Track' to On.

(e.g. Gordius LG appears as 'USB audio Device' here)

That will route your midi controller direct to the Live Midi tracks, bypassing any
need to Midi Learn through Ableton itself.

2) the Audio tab in Preferences is where to go if you need to set up your audio interface.
There's a useful test tone for the output, and a "Hardware Setup" button to access your
audio interface. Test tone should be nice and pure, if it's a glitchy it's time to increase
your buffer size.

3) By default, Ableton starts up with one Audio and one Midi track. That's what you need.

4) Put Echoloop on an audio track.



if Echoloop isn't on the list you need to put it in Live's VST plugin folder.
(or Preferences>File Folder and tell Live where to look)

5) Make sure View>In/Out is ticked (it's not by default)



6) Now the tracks look like this



"Audio From" needs to be "Ext In" then select your desired audio input channel. (stereo if you like)
 Monitor "In" for both tracks.
 Midi To should be "1-Audio"
 Then it looks like this.



Midi From...select if needed

(here it says 'Looplug' where you would see the name Echoloop, the screenshot was taken using an earlier version of the plugin)

NOTE: In the Echoloop plugin you'll have to leave the midi Channels (e.g. BtnChan) on 1. Ableton Live will pass midi data on Channel 1, regardless of which channel you have programmed into your controller.

If you want to control more than one Echoloop using different midi channels then each audio track with an Echoloop will need to have a corresponding midi track, and you'll be able to filter the midi channel you require using the midi channel. The place to set it is in the midi channel just above where it says 'monitor'.

8) Right , off you go then. Your midi controller should now be able to do Button Presses, CC for Feedback etc, and change Preset (Locals) by ProgCh.

Troubleshooting.

If you follow **exactly** the instructions it should work, any changes you make to the method probably won't.

Get it working in the most basic possible setup **before** starting build your dream setup. Don't use midi learn, or midi mapping, and don't put the plugin on an Aux.

If you're on PC, make sure you're using ver 425 or later of the plugin (the version number is in the filename for the .zip archive which you download).

Midi Learn in Ableton.

This is not needed for this method, it's covered in the Echoloop manual.

andy
Mathons